

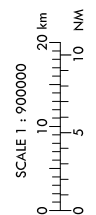
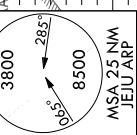
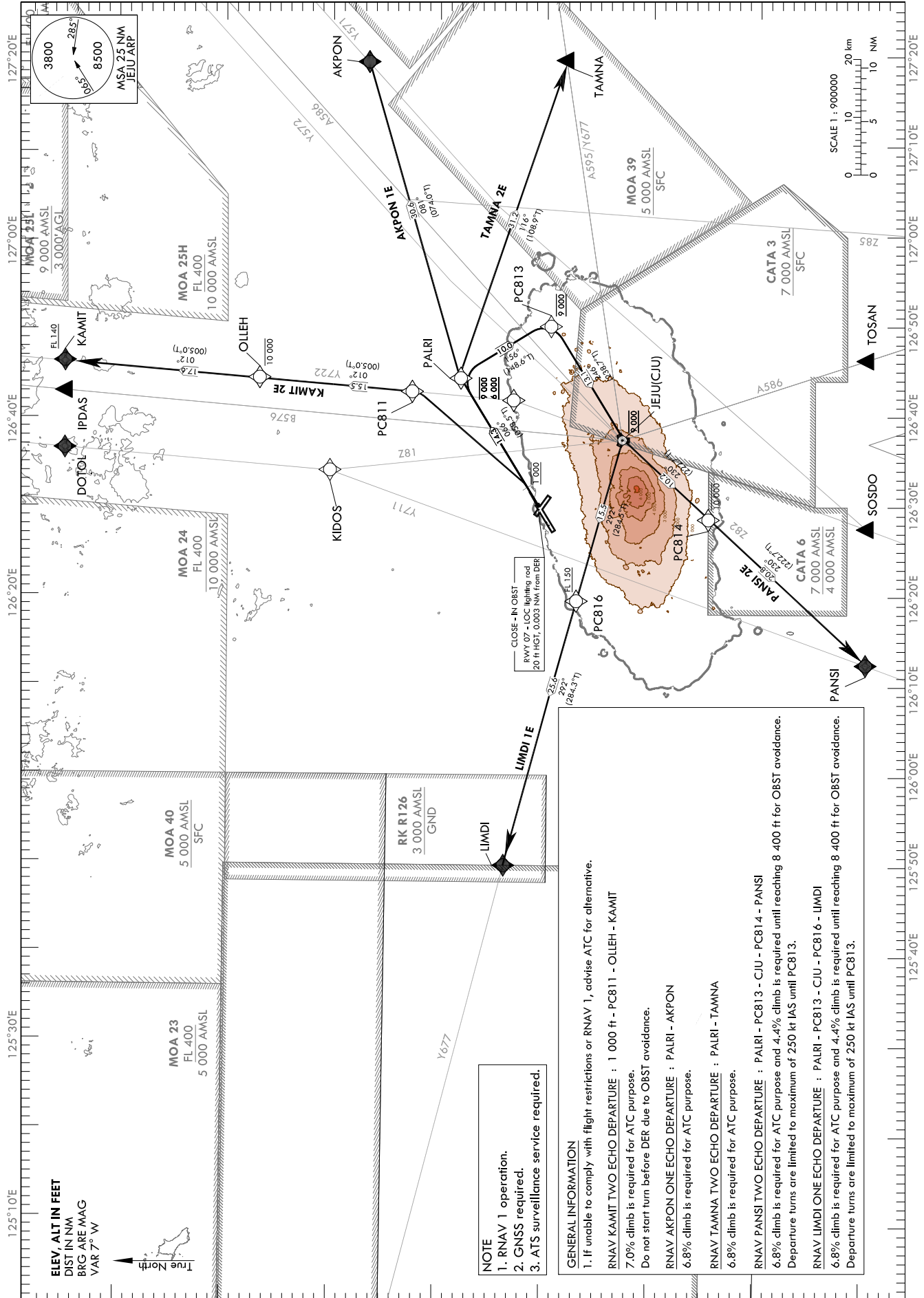
STANDARD DEPARTURE CHART
INSTRUMENT(SID) - ICAO

TRANSITION ALT 14 000
TRANSITION LVL FL 140

JEJU DEP 119.225
JEJU TWR 118.2
118.55

JEJU/Jeju Intl(RKPC)
RWY 07
RNAV AKPON 1E, RNAV TAMNA 2E
RNAV PANSI 2E, RNAV LIMDI 1E

Note : Departure under ICAO Flight Procedures.



NOTE
1. RNAV 1 operation.
2. GNSS required.
3. ATS surveillance service required.

GENERAL INFORMATION
1. If unable to comply with flight restrictions or RNAV 1, advise ATC for alternative.
RNAV KAMIT TWO ECHO DEPARTURE : 1 000 ft - PC811 - OLLEH - KAMIT
7.0% climb is required for ATC purpose.
Do not start turn before DER due to OBST avoidance.
RNAV AKPON ONE ECHO DEPARTURE : PALRI - AKPON
6.8% climb is required for ATC purpose.
RNAV TAMNA TWO ECHO DEPARTURE : PALRI - TAMNA
6.8% climb is required for ATC purpose.
RNAV PANSI TWO ECHO DEPARTURE : PALRI - PC813 - CIU - PC814 - PANSI
6.8% climb is required for ATC purpose and 4.4% climb is required until reaching 8 400 ft for OBST avoidance.
Departure turns are limited to maximum of 250 kt IAS until PC813.
RNAV LIMDI ONE ECHO DEPARTURE : PALRI - PC813 - CIU - PC816 - LIMDI
6.8% climb is required for ATC purpose and 4.4% climb is required until reaching 8 400 ft for OBST avoidance.
Departure turns are limited to maximum of 250 kt IAS until PC813.

Change : Information of airway(Y655 → Y677).

JEJU/Jeju Intl(RKPC)
RWY 07

RNAV KAMIT 2E

RNAV AKPON 1E, RNAV TAMNA 2E

RNAV PANSI 2E, RNAV LIMDI 1E

AERONAUTICAL DATA TABULATION

Standard Instrument Departure Procedure Coding Tables

Serial Number	Path Descriptor	Waypoint Identifier	Fly-over	Course/Track °M(T)	Distance (NM)	Turn direction	Altitude (ft)	Speed (kt)	Coordinates	VPA/RDH	Navigation specification	Remarks
001	CA	-	-	066(058.5)	-	-	@1 000	-	-	-	RNAV 1	-
002	DF	PC811	-	-	-	L	-	-	33°42'12.1"N 126°42'48.8"E	-	RNAV 1	-
003	TF	OLLEH	-	012(005.0)	15.5	-	-10 000	-	33°57'42.2"N 126°44'26.5"E	-	RNAV 1	-
004	TF	KAMIT	-	012(005.0)	17.6	-	+FL 140	-	34°15'14.1"N 126°46'17.7"E	-	RNAV 1	-

Serial Number	Path Descriptor	Waypoint Identifier	Fly-over	Course/Track °M(T)	Distance (NM)	Turn direction	Altitude (ft)	Speed (kt)	Coordinates	VPA/RDH	Navigation specification	Remarks
001	CF	PALRI	-	066(058.5)	14.3	-	-9 000 +6 000	-	33°38'27.2"N 126°44'37.4"E	-	RNAV 1	-
002	TF	AKPON	-	081(074.0)	30.6	-	-	-	33°46'49.6"N 127°19'53.0"E	-	RNAV 1	-

Serial Number	Path Descriptor	Waypoint Identifier	Fly-over	Course/Track °M(T)	Distance (NM)	Turn direction	Altitude (ft)	Speed (kt)	Coordinates	VPA/RDH	Navigation specification	Remarks
001	CF	PALRI	-	066(058.5)	14.3	-	-9 000 +6 000	-	33°38'27.2"N 126°44'37.4"E	-	RNAV 1	-
002	TF	TAMNA	-	116(108.9)	31.2	-	-	-	33°28'15.5"N 127°19'53.0"E	-	RNAV 1	-

Serial Number	Path Descriptor	Waypoint Identifier	Fly-over	Course/Track °M(T)	Distance (NM)	Turn direction	Altitude (ft)	Speed (kt)	Coordinates	VPA/RDH	Navigation specification	Remarks
001	CF	PALRI	-	066(058.5)	14.3	-	-	-250	33°38'27.2"N 126°44'37.4"E	-	RNAV 1	-
002	TF	PC813	-	156(148.6)	10.0	-	@9 000	-250	33°29'55.5"N 126°50'50.0"E	-	RNAV 1	-
003	TF	CJU	-	246(238.7)	13.1	-	@9 000	-	33°23'04.6"N 126°37'26.8"E	-	RNAV 1	-
004	TF	PC814	-	230(222.8)	10.2	-	-10 000	-	33°15'36.4"N 126°29'13.5"E	-	RNAV 1	-
005	TF	PANSI	-	230(222.7)	20.8	-	-	-	33°00'14.4"N 126°12'25.1"E	-	RNAV 1	-

Serial Number	Path Descriptor	Waypoint Identifier	Fly-over	Course/Track °M(T)	Distance (NM)	Turn direction	Altitude (ft)	Speed (kt)	Coordinates	VPA/RDH	Navigation specification	Remarks
001	CF	PALRI	-	066(058.5)	14.3	-	-	-250	33°38'27.2"N 126°44'37.4"E	-	RNAV 1	-
002	TF	PC813	-	156(148.6)	10.0	-	@9 000	-250	33°29'55.5"N 126°50'50.0"E	-	RNAV 1	-
003	TF	CJU	-	246(238.7)	13.1	-	@9 000	-	33°23'04.6"N 126°37'26.8"E	-	RNAV 1	-
004	TF	PC816	-	292(284.5)	15.5	-	+FL 150	-	33°26'56.5"N 126°19'30.8"E	-	RNAV 1	-
005	TF	LIMDI	-	292(284.3)	25.6	-	-	-	33°33'13.3"N 125°49'53.0"E	-	RNAV 1	-

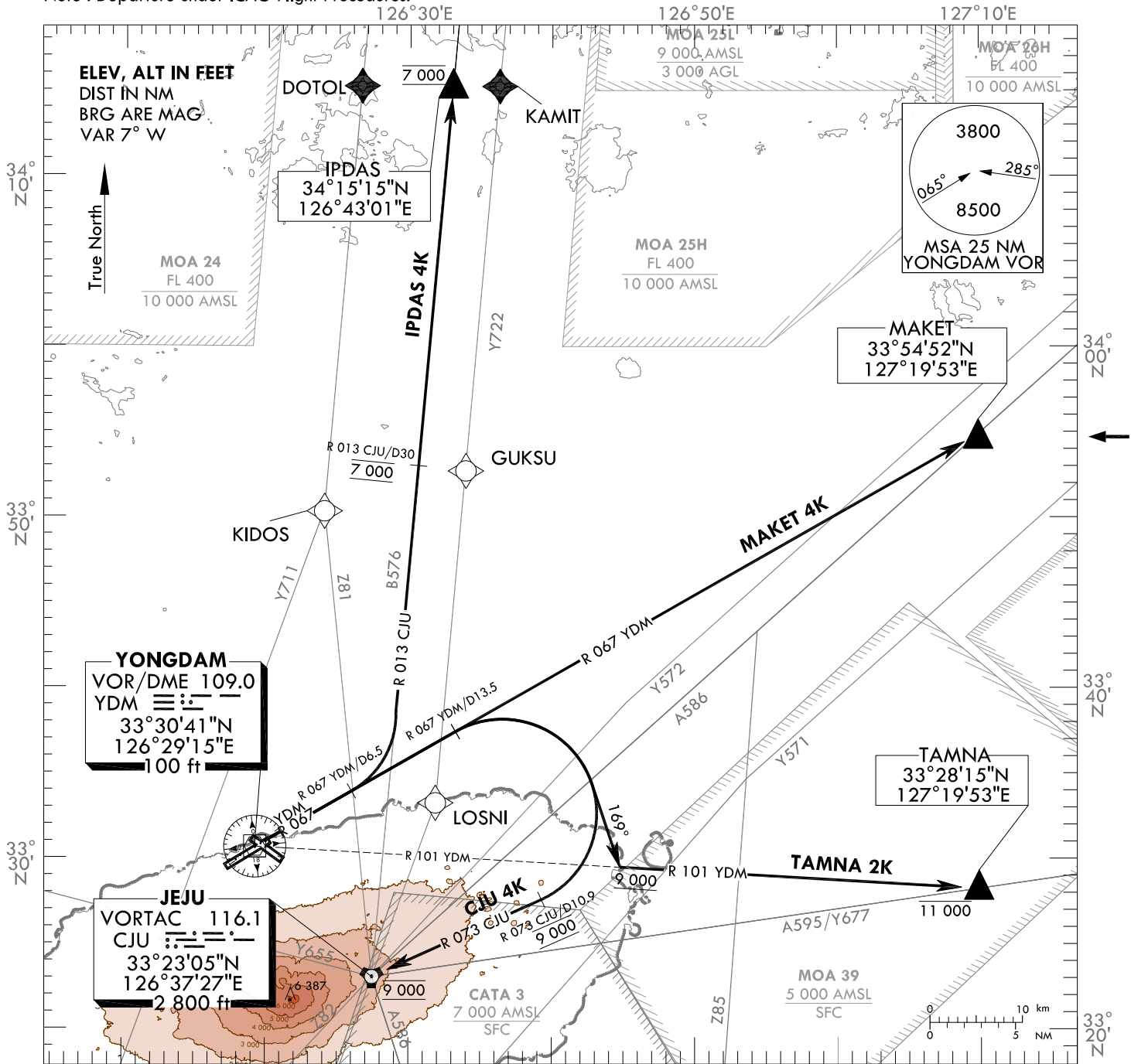
STANDARD DEPARTURE CHART
INSTRUMENT(SID) - ICAO

TRANSITION ALT 14 000
TRANSITION LVL FL 140

JEJU DEP 119.225
121.2
JEJU TWR 118.2
118.55

JEJU/Jeju Intl(RKPC)
RWY 07
IPDAS 4K, MAKET 4K
TAMNA 2K, CJU 4K

Note : Departure under ICAO Flight Procedures.



IPDAS FOUR KILO DEPARTURE
126°40'E 127°00'E

MAKET FOUR KILO DEPARTURE

TAMNA TWO KILO DEPARTURE

JEJU FOUR KILO DEPARTURE

Change : Information of standard instrument departure procedure for RYW 07(MAKET 4K) and Amended phrase(daparture → departure).

INTENTIONALLY

LEFT

BLANK

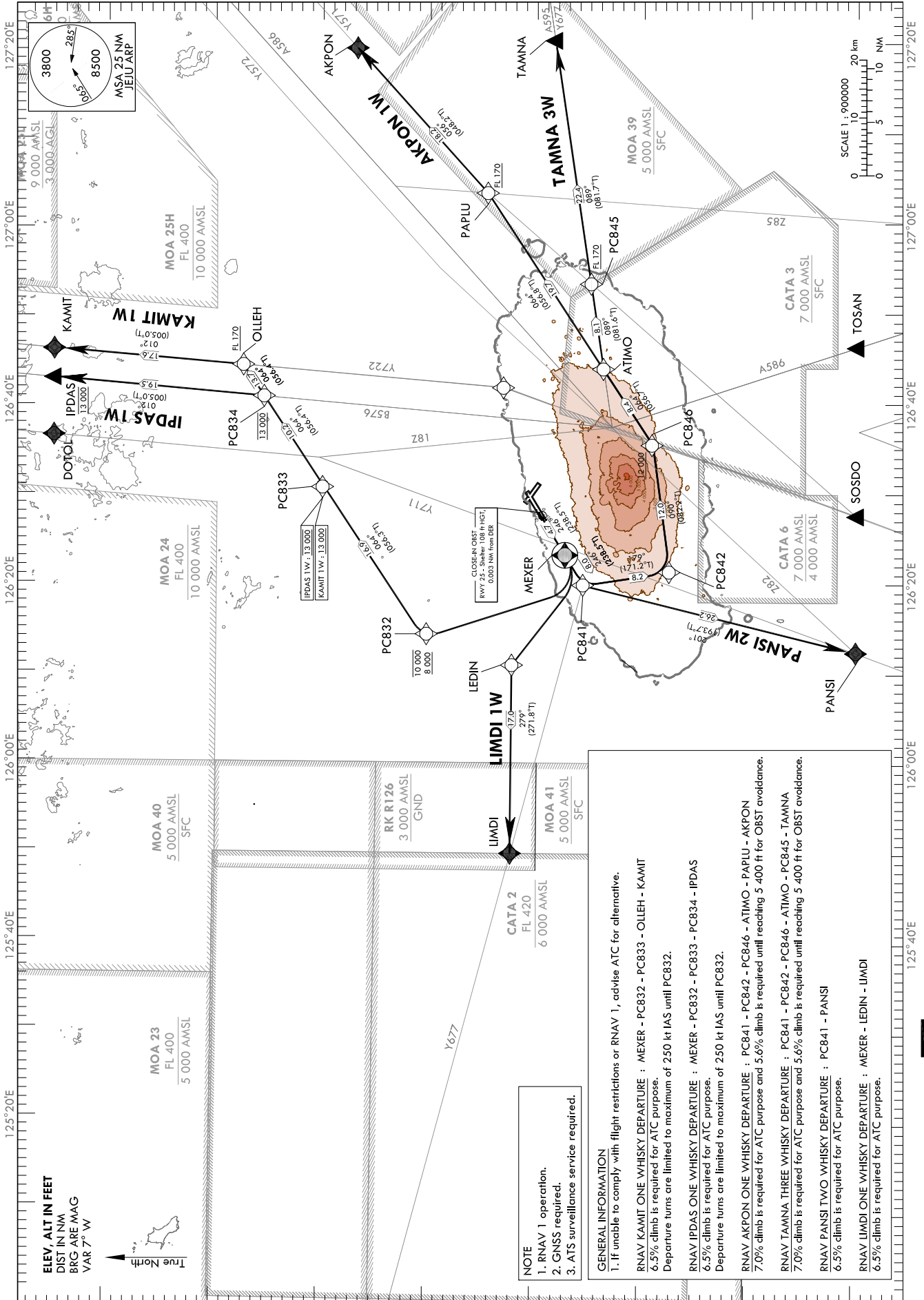
STANDARD DEPARTURE CHART
INSTRUMENT(SID) - ICAO

TRANSITION ALT 14 000
TRANSITION LVL FL 140

JEJU DEP 119.225
121.2
JEJU TWR 118.2
118.55

JEJU/Jeju Intl(RKPC)
RWY 25
RNAV KAMIT 1W, RNAV IPDAS 1W
RNAV AKPON 1W, RNAV TAMNA 3W
RNAV PANSI 2W, RNAV LIMDI 1W

Note : Departure under ICAO Flight Procedures.



Change : Information of airway(Y655 → Y677).

JEJU/Jeju Intl(RKPC)
RWY 25
RNAV KAMIT 1W, RNAV IPDAS 1W
RNAV AKPON 1W

AERONAUTICAL DATA TABULATION

Standard Instrument Departure Procedure Coding Tables

RNAV KAMIT 1W

Serial Number	Path Descriptor	Waypoint Identifier	Fly-over	Course/Track °M(T)	Distance (NM)	Turn direction	Altitude (ft)	Speed (kt)	Coordinates	VPA/RDH	Navigation specification	Remarks
001	CF	MEXER	Y	246(238.5)	4.7	-	-	-250	33°27'28.0"N 126°23'12.0"E	-	RNAV 1	-
002	DF	PC832	-	-	-	R	-10 000 +8 000	-250	33°40'46.0"N 126°13'51.9"E	-	RNAV 1	-
003	TF	PC833	-	064(056.3)	16.9	-	+13 000	-	33°50'08.8"N 126°30'44.8"E	-	RNAV 1	-
004	TF	OLLEH	-	064(056.4)	13.7	-	+FL 170	-	33°57'42.2"N 126°44'26.5"E	-	RNAV 1	-
005	TF	KAMIT	-	012(005.0)	17.6	-	-	-	34°15'14.1"N 126°46'17.7"E	-	RNAV 1	-

RNAV IPDAS 1W

Serial Number	Path Descriptor	Waypoint Identifier	Fly-over	Course/Track °M(T)	Distance (NM)	Turn direction	Altitude (ft)	Speed (kt)	Coordinates	VPA/RDH	Navigation specification	Remarks
001	CF	MEXER	Y	246(238.5)	4.7	-	-	-250	33°27'28.0"N 126°23'12.0"E	-	RNAV 1	-
002	DF	PC832	-	-	-	R	-10 000 +8 000	-250	33°40'46.0"N 126°13'51.9"E	-	RNAV 1	-
003	TF	PC833	-	064(056.3)	16.9	-	@13 000	-	33°50'08.8"N 126°30'44.8"E	-	RNAV 1	-
004	TF	PC834	-	064(056.4)	10.2	-	@13 000	-	33°55'46.2"N 126°40'55.7"E	-	RNAV 1	-
005	TF	IPDAS	-	012(005.0)	19.5	-	@13 000	-	34°15'14.7"N 126°43'01.4"E	-	RNAV 1	-

RNAV AKPON 1W

Serial Number	Path Descriptor	Waypoint Identifier	Fly-over	Course/Track °M(T)	Distance (NM)	Turn direction	Altitude (ft)	Speed (kt)	Coordinates	VPA/RDH	Navigation specification	Remarks
001	CF	PC841	-	246(238.5)	8.0	-	-	-	33°25'42.7"N 126°19'47.8"E	-	RNAV 1	-
002	TF	PC842	-	179(171.2)	8.2	-	-	-	33°17'38.3"N 126°21'17.3"E	-	RNAV 1	-
003	TF	PC846	-	090(082.2)	12.0	-	+12 000	-	33°19'15.6"N 126°35'28.6"E	-	RNAV 1	-
004	TF	ATIMO	-	064(056.7)	8.4	-	-	-	33°23'52.5"N 126°43'51.2"E	-	RNAV 1	-
005	TF	PAPLU	-	064(056.8)	19.7	-	+FL 170	-	33°34'41.3"N 127°03'36.5"E	-	RNAV 1	-
006	TF	AKPON	-	056(048.2)	18.2	-	-	-	33°46'49.6"N 127°19'53.0"E	-	RNAV 1	-

JEJU/Jeju Intl(RKPC)
RWY 25

RNAV TAMNA 3W

RNAV PANSI 2W, RNAV LIMDI 1W

AERONAUTICAL DATA TABULATION

Standard Instrument Departure Procedure Coding Tables

RNAV TAMNA 3W												
Serial Number	Path Descriptor	Waypoint Identifier	Fly-over	Course/Track °M(°T)	Distance (NM)	Turn direction	Altitude (ft)	Speed (kt)	Coordinates	VPA/RDH	Navigation specification	Remarks
001	CF	PC841	-	246(238.5)	8.0	-	-	-	33°25'42.7"N 126°19'47.8"E	-	RNAV 1	-
002	TF	PC842	-	179(171.2)	8.2	-	-	-	33°17'38.3"N 126°21'17.3"E	-	RNAV 1	-
003	TF	PC846	-	090(082.2)	12.0	-	+12 000	-	33°19'15.6"N 126°35'28.6"E	-	RNAV 1	-
004	TF	ATIMO	-	064(056.7)	8.4	-	-	-	33°23'52.5"N 126°43'51.2"E	-	RNAV 1	-
005	TF	PC845	-	089(081.6)	8.1	-	+FL 170	-	33°25'03.2"N 126°53'24.0"E	-	RNAV 1	-
006	TF	TAMNA	-	089(081.7)	22.4	-	-	-	33°28'15.5"N 127°19'53.0"E	-	RNAV 1	-

RNAV PANSI 2W												
Serial Number	Path Descriptor	Waypoint Identifier	Fly-over	Course/Track °M(°T)	Distance (NM)	Turn direction	Altitude (ft)	Speed (kt)	Coordinates	VPA/RDH	Navigation specification	Remarks
001	CF	PC841	-	246(238.5)	8.0	-	-	-	33°25'42.7"N 126°19'47.8"E	-	RNAV 1	-
002	TF	PANSI	-	201(193.7)	26.2	-	-	-	33°00'14.4"N 126°12'25.1"E	-	RNAV 1	-

RNAV LIMDI 1W												
Serial Number	Path Descriptor	Waypoint Identifier	Fly-over	Course/Track °M(°T)	Distance (NM)	Turn direction	Altitude (ft)	Speed (kt)	Coordinates	VPA/RDH	Navigation specification	Remarks
001	CF	MEXER	Y	246(238.5)	4.7	-	-	-	33°27'28.0"N 126°23'12.0"E	-	RNAV 1	-
002	DF	LEDIN	-	-	-	R	-	-	33°32'42.1"N 126°10'14.9"E	-	RNAV 1	-
003	TF	LIMDI	-	279(271.8)	17.0	-	-	-	33°33'13.3"N 125°49'53.0"E	-	RNAV 1	-

Change : Amended phrase(VPA/TCH → VPA/RDH).

INTENTIONALLY

LEFT

BLANK

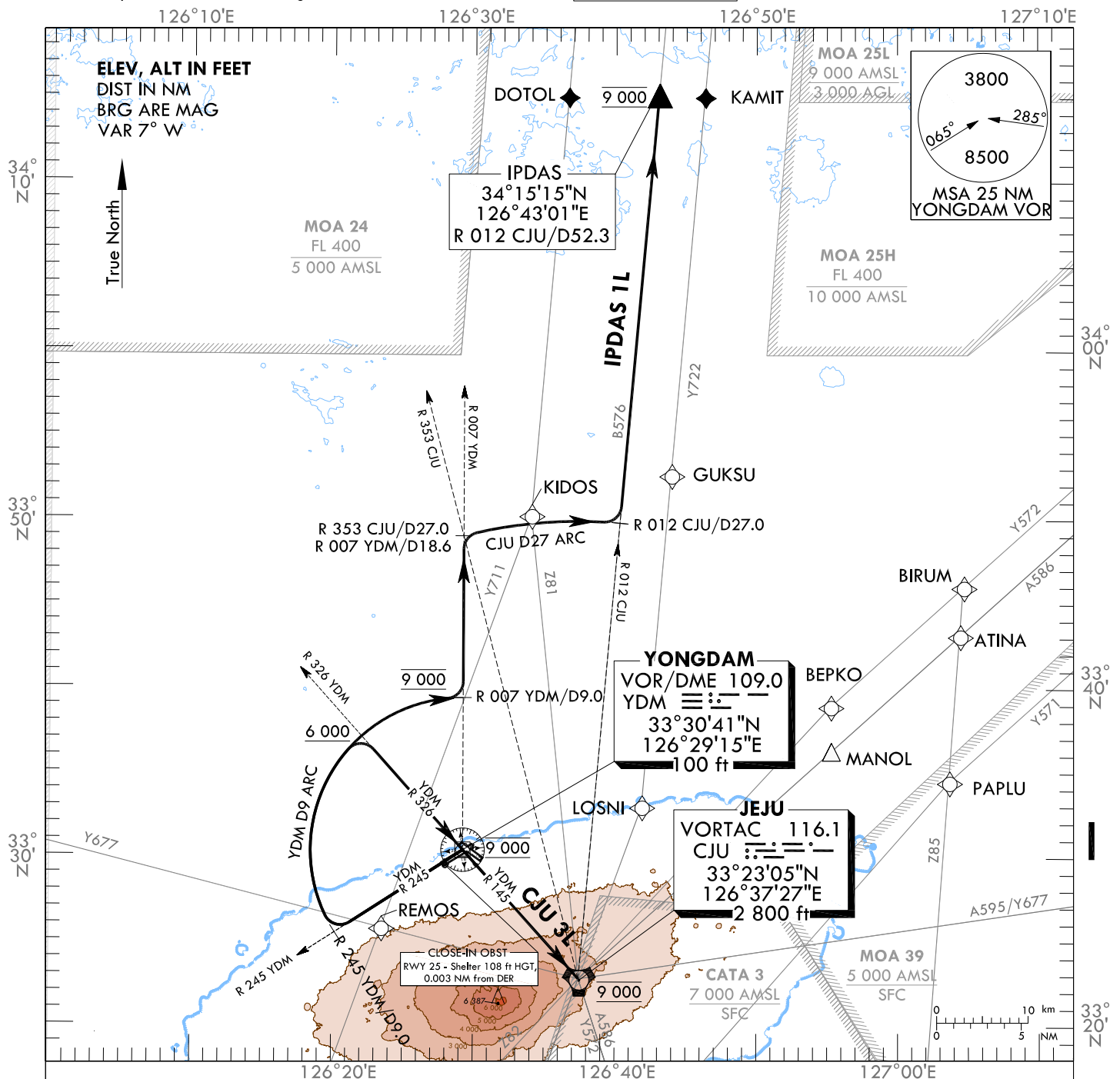
STANDARD DEPARTURE CHART
INSTRUMENT(SID) - ICAO

TRANSITION ALT 14 000
TRANSITION LVL FL 140

JEJU DEP 119.225
121.2
JEJU TWR 118.2
118.55

JEJU/Jeju Intl(RKPC)
RWY 25
CJU 3L, IPDAS 1L

Note : Departure under ICAO Flight Procedures.



JEJU THREE LIMA DEPARTURE

Climb on R 245 YDM until D9.0, then turn Right and proceed via YDM D9.0 arc to R 326 YDM, then Right turn via R 326 YDM to YDM, then direct to CJU via R 145 YDM.

* Minimum 6.0% CG is required for ATC purpose and 3.7% CG is required until 1 400 ft for OBST avoidance.

* Cross R 326 YDM at or above 6 000 ft, then YDM at 9 000 ft and maintain 9 000 ft unless otherwise directed by ATC.

IPDAS ONE LIMA DEPARTURE

Climb on R 245 YDM until D9.0, then turn Right and proceed via YDM D9.0 arc to R 007 YDM, then turn Left on R 007 YDM until D18.6 to join R 353 CJU and proceed via CJU D27.0 arc to R 012 CJU, then Left turn via R 012 CJU to IPDAS.

* Minimum 6.0% CG is required for ATC purpose and 3.7% CG is required until 1 400 ft for OBST avoidance.

* Cross R 326 YDM at or above 6 000 ft, then Cross R 007 YDM/D9.0 at 9 000 ft and maintain 9 000 ft unless otherwise directed by ATC.

Change : Information of airway(Y655 → Y677).

INTENTIONALLY

LEFT

BLANK

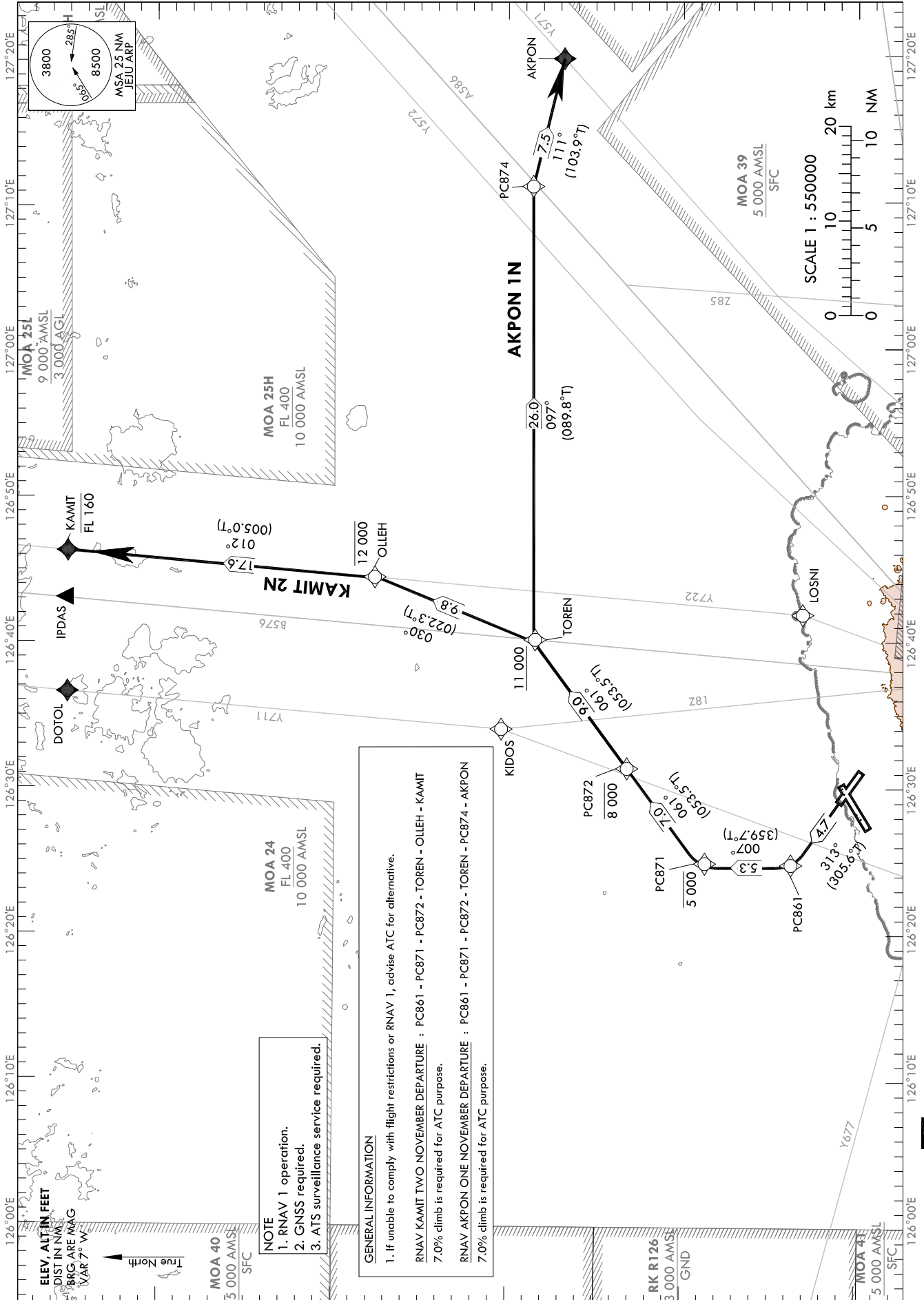
STANDARD DEPARTURE CHART
INSTRUMENT(SID) - ICAO

TRANSITION ALT 14 000
TRANSITION LVL FL 140

JEJU DEP 119.225
121.2
JEJU TWR 118.2
118.55

JEJU/Jeju Intl(RKPC)
RWY 31
RNAV KAMIT 2N
RNAV AKPON 1N

Note : Departure under ICAO Flight Procedures.



Change : Information of airway(Y655 → Y677).

Standard Instrument Departure Procedure Coding Tables

RNAV KAMIT 2N

Serial Number	Path Descriptor	Waypoint Identifier	Fly-over	Course/Track °M(°T)	Distance (NM)	Turn direction	Altitude (ft)	Speed (kt)	Coordinates	VPA/RDH	Navigation specification	Remarks
001	CF	PC861	-	313(305.6)	4.7	-	-	-	33°33'43.8"N 126°24'34.1"E	-	RNAV 1	-
002	TF	PC871	-	007(359.7)	5.3	-	-5 000	-	33°39'05.3"N 126°24'32.0"E	-	RNAV 1	-
003	TF	PC872	-	061(053.5)	7.0	-	-8 000	-	33°43'16.9"N 126°31'18.7"E	-	RNAV 1	-
004	TF	TOREN	-	061(053.5)	9.0	-	+11 000	-	33°48'36.8"N 126°39'57.7"E	-	RNAV 1	-
005	TF	OLLEH	-	030(022.3)	9.8	-	-12 000	-	33°57'42.2"N 126°44'26.5"E	-	RNAV 1	-
006	TF	KAMIT	-	012(005.0)	17.6	-	-FL 160	-	34°15'14.1"N 126°46'17.7"E	-	RNAV 1	-

RNAV AKPON 1N

Serial Number	Path Descriptor	Waypoint Identifier	Fly-over	Course/Track °M(°T)	Distance (NM)	Turn direction	Altitude (ft)	Speed (kt)	Coordinates	VPA/RDH	Navigation specification	Remarks
001	CF	PC861	-	313(305.6)	4.7	-	-	-	33°33'43.8"N 126°24'34.1"E	-	RNAV 1	-
002	TF	PC871	-	007(359.7)	5.3	-	-5 000	-	33°39'05.3"N 126°24'32.0"E	-	RNAV 1	-
003	TF	PC872	-	061(053.5)	7.0	-	-8 000	-	33°43'16.9"N 126°31'18.7"E	-	RNAV 1	-
004	TF	TOREN	-	061(053.5)	9.0	-	+11 000	-	33°48'36.8"N 126°39'57.7"E	-	RNAV 1	-
005	TF	PC874	-	097(089.8)	26.0	-	-	-	33°48'38.0"N 127°11'08.8"E	-	RNAV 1	-
006	TF	AKPON	-	111(103.9)	7.5	-	-	-	33°46'49.6"N 127°19'53.0"E	-	RNAV 1	-

STANDARD DEPARTURE CHART
INSTRUMENT(SID) - ICAO

TRANSITION ALT 14 000
TRANSITION LVL FL 140

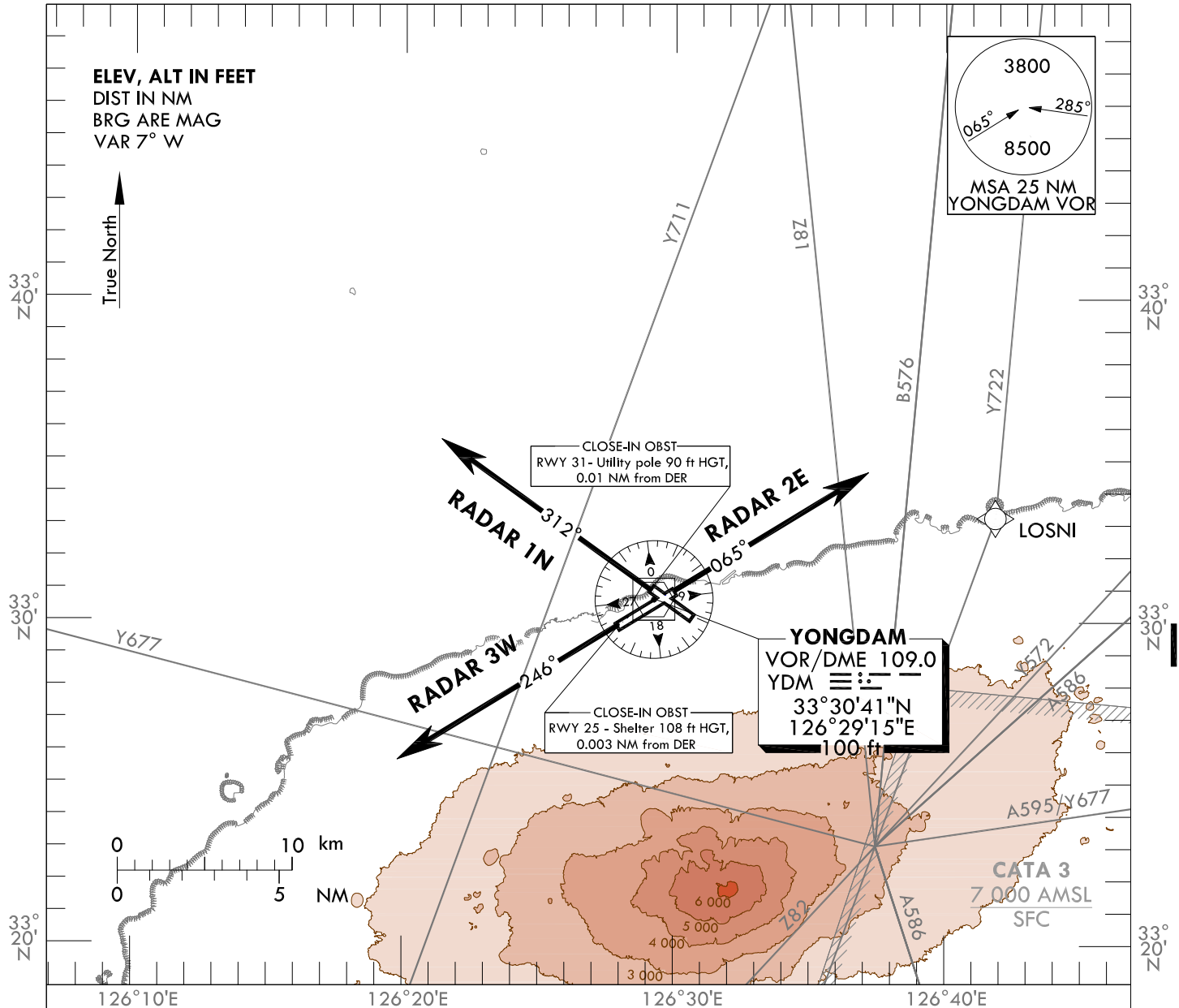
JEJU DEP 119.225
121.2
JEJU TWR 118.2
118.55

JEJU/Jeju Intl(RKPC)
RWY 07 RADAR 2E
RWY 25 RADAR 3W
RWY 31 RADAR 1N

Note : Departure under ICAO Flight Procedures.

126°30'E

126°40'E



RADAR TWO ECHO DEPARTURE

TAKE OFF RWY 07 : Climb on RWY HDG until reaching 2 200 ft for RADAR VECTOR.
* Minimum 4.5% CG is required until 2 200 ft for ATC purpose.

RADAR THREE WHISKEY DEPARTURE

TAKE OFF RWY 25 : Climb on RWY HDG until reaching 3 000 ft for RADAR VECTOR.
* Minimum 3.7% CG is required until 1 400 ft for OBST avoidance.

RADAR ONE NOVEMBER DEPARTURE

TAKE OFF RWY 31 : Climb on RWY HDG until reaching 2 200 ft for RADAR VECTOR.
* Minimum 4.5% CG is required until 2 200 ft for ATC purpose.

NOTE : These procedures are available only for aircraft that don't satisfy RNAV 1 navigation specification.

Change : Information of airway(Y655 → Y677).

INTENTIONALLY

LEFT

BLANK